

LEASEHOLD



Apartment - Second Floor (EPC Rating: C)

**12A AVALON COURT HARTSWOOD CLOSE, BUSHEY,
HERTFORDSHIRE, WD23 2GF**

£320,000



First Step



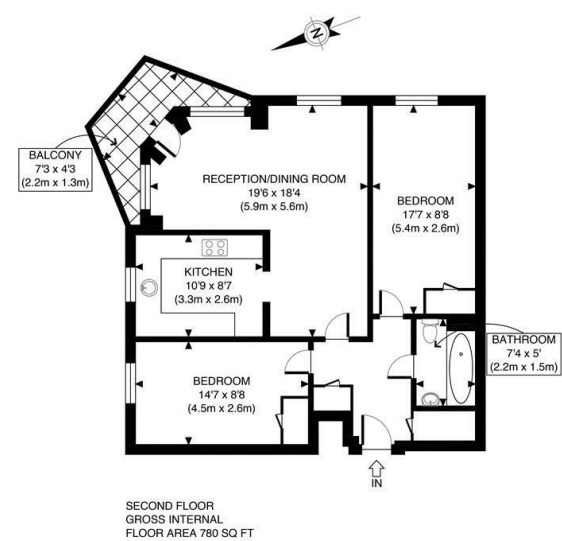
2 Bedroom Apartment - Second Floor located in Bushey

Welcome to this splendid second-floor apartment located in the desirable Avalon Court on Hartswood Close, Bushey. Built in 2006, this property is presented in immaculate condition, making it an ideal choice for those seeking a modern and comfortable living space.

The apartment features two well-proportioned bedrooms, perfect for a small family or professionals looking for extra space. The reception room is inviting and provides a lovely area for relaxation or entertaining guests.

One of the standout features of this property is the delightful balcony, offering a charming outdoor space to enjoy fresh air and views. Additionally, the apartment benefits from two allocated parking spaces, a rare find in such a sought-after location.

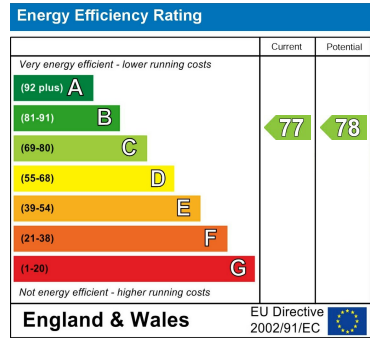
Situated close to the M1 motorway, as well as Watford Junction and Bushey Station, this property boasts excellent transport links, making it easy to commute to London and beyond. The surrounding area offers a variety of local amenities, ensuring that all your daily needs are within easy reach.



APPROX. GROSS INTERNAL FLOOR AREA 780 SQ FT / 72 SQM	Avalon Court
Disclaimer: Floor plan measurements are approximate and are for illustrative purposes only. While we do not doubt the floor plan accuracy and completeness, you or your advisors should conduct a careful, independent investigation of the property in respect of monetary valuation.	date 25/04/24
	photoplan

Council Tax Band
C
Energy Performance Graph

Call us on
01462 659 730
sales@firststep.ltd
www.firststep.ltd



Agents Note: Whilst every care has been taken to prepare these particulars, they are for guidance purposes only. All measurements are approximate and are for general guidance purposes only and whilst every care has been taken to ensure their accuracy, they should not be relied upon and potential buyers are advised to recheck the measurements.